



**Hello** my worm friends, William the worm here! I'm sure you have learned plenty about us red wrigglers during your time in class so for this month I am going to give you a couple of tips on your worm bin if your worms are having any troubles. Also, remember that the Worm Lady is only a phone call or email away.



## WORM BIN TROUBLESHOOTING

**Symptom:** Maggots in bin.

**Cause:** Meat, dairy or other animal products.

**Solution:** Keep animal products out of the bin. Cover bedding with cardboard.

**Symptom:** Worms crawling up sides of bin.

**Cause:** The bedding is too wet, pH is off or bedding is now all castings.

**Solution:** Do not add water, add shredded dried paper to top of bin or it is time

**Symptom:** Smells like rotten eggs or garbage.

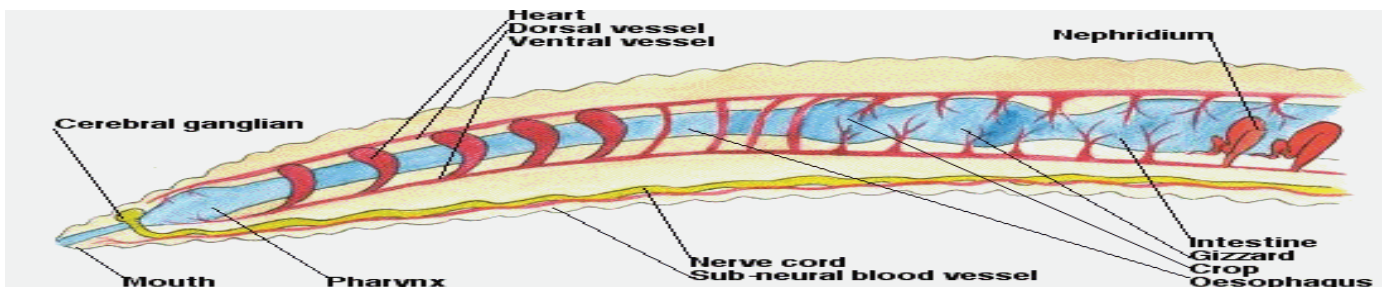
**Causes:** Too wet. Meat, oil, or dairy products are in the bin. Food wastes are not covered.

**Solution:** Mix in shredded paper, dry leaves, peat moss or sawdust. Stop feeding until moisture level decreased.

**Symptom:** Fruit flies swarm out when bin opened.

**Cause:** Exposed food waste.

**Solution:** Always cover food waste with bedding. If you still have fruit flies, cover bedding with cardboard, change location of bin, create a fly trap. For more ideas and instructions call REAPS.



Send any questions, art or inquiries to:  
**The Worm Lady c/o R.E.A.P.S Box 444 Prince George, BC V2L 4S6**  
 Ph: 250-561-7327 or email: [thewormlady@reaps.org](mailto:thewormlady@reaps.org)