

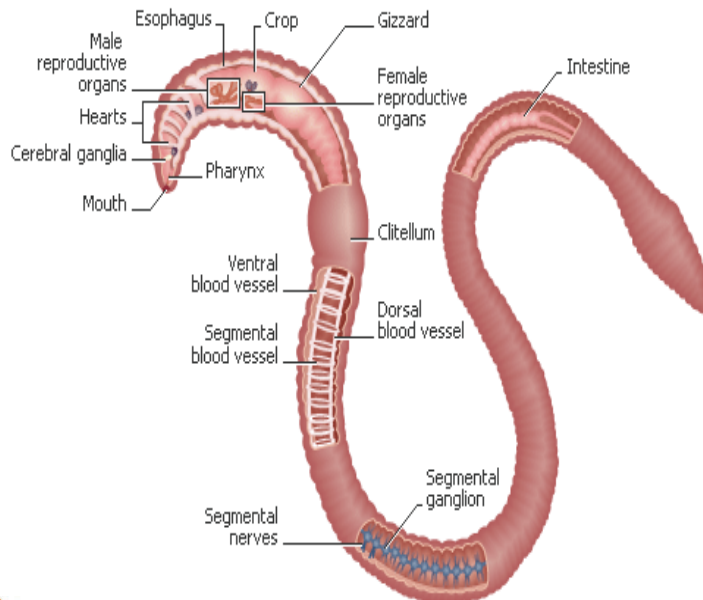
Hello to all of my friends, hope you all had a fun and safe Halloween. Your worm buddies would like to thank you for giving them a warm, safe place to stay while the weather gets colder and colder. Don't forget to keep fluffing the bedding and make sure your worms are in a cool, dark place in your classroom.



Where do the worms go during the winter? While your red wigglers are grateful to have a warm place to stay over the winter, you might be wondering where the worms in your garden go. In order to stay warm as



the ground gets colder, the worms start to burrow into the ground. They will keep digging until they are as much as 2 meters underground, where the soil won't freeze. Once it gets cold enough, the worms will go into hibernation and sleep away the rest of the winter.



I'm sure you've started to notice that your worms have some interesting features on their bodies. So take a good look and see if you spot the different parts of your wiggly worm friends!



Send any questions, art or inquiries to:
The Worm Lady c/o R.E.A.P.S Box 444 Prince George, BC V2L 4S6
Ph: 250-561-7327 or email: thewormlady@reaps.org