

Hello to all you worm lovers out there! I trust everything is going well with our wiggly friends. By now you may have noticed that there are more castings being made- **GARDENER'S GOLD!** If you have any questions regarding your worms, please reach out to us by calling (250) 561-7327 or send us an email to [wormlady@reaps.org](mailto:wormlady@reaps.org).

### Locate the body parts on a worm from your bin!

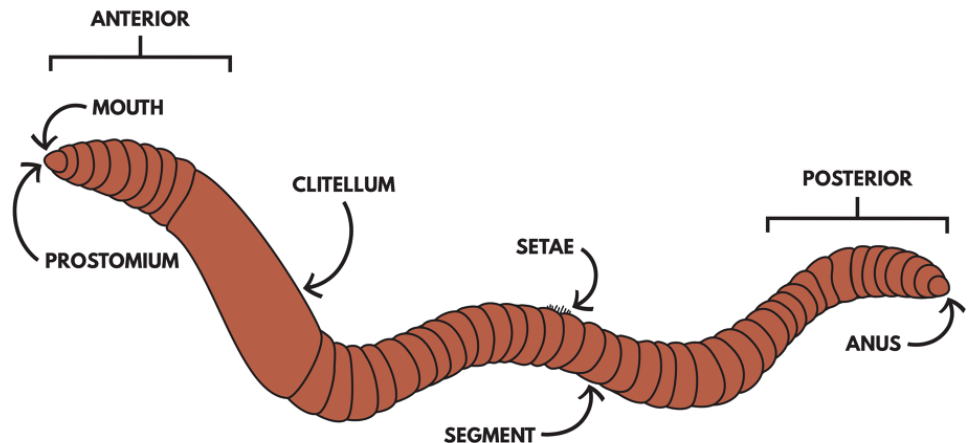
**Head/Mouth**— The head of the worm is always located on the end of the worm closest to the collar. Place a worm on a piece of paper and observe which direction it travels.

**Collar**— Scientifically called a *clitellum*, the short and chubby section of the worm is used for reproduction.

**Segments**— The segments are composed of multiple circular muscles which contract and expand to give the worm movement. A single worm can have anywhere from 200-400 segments

**Setae**— Each segment has small hairs or bristles called *setae*. The bristles help anchor and control the worm when moving through soil.

**Tail**— This is where the *anus* is located. Waste is discharged here.



### Red Wigglers: Cool Facts



**Lots of Heart:** Red wiggler worms have up to five different hearts. This is so they can pump the blood from one end of their long bodies to the other. These hearts allow them to have extra sensitive nerves—they can often detect people just from their footsteps. This is a good reminder to be careful when handling your worms

**Boneless:** Worms have no bones. Instead, they are held together by tiny little rings, known as segments. These segments give the worms their structure.

**Long-living:** In nature, the red wiggler worm typically lives for only roughly a year. In a bin, however, a red wiggler can last up to 8 years!

Send any questions, art or inquiries to:  
**The Worm Lady c/o R.E.A.P.S Box 444 Prince George, BC V2L 4S6**  
 Ph: 250-561-7327 or email: [thewormlady@reaps.org](mailto:thewormlady@reaps.org)

# REAPS READER

Have you helped the environment today?

November 11th is Remembrance Day. On this day, we will take time to honor the memory of the people who fought for our freedom. We will pause for 1 minute to remember.

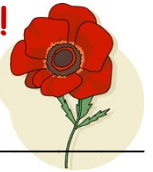


**Poppy, poppy what do you say?  
Wear me on Remembrance Day.**

**Poppy, poppy what do you tell?  
Many soldiers in battle fell.**

What will you think of during your 1 minute of silence?

**Poppy, poppy what should we know?  
That peace on earth should  
Grow, grow, grow!**



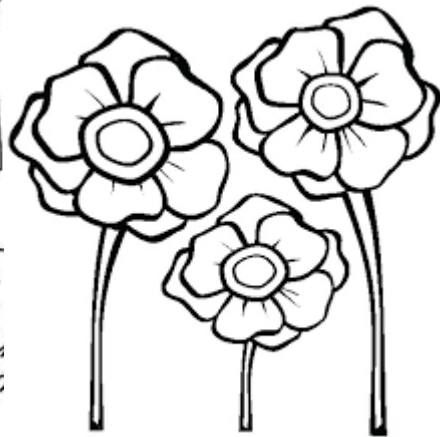
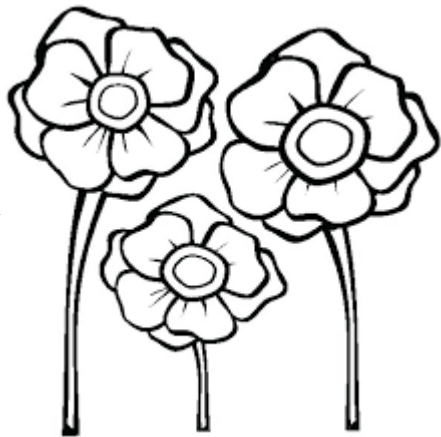
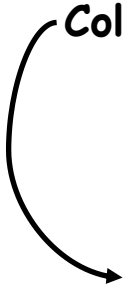
I will think of:

---

---

---

**Colour Me**



# TOY DRIVE



Just a friendly reminder that the REAPS Annual Toy Drive is on Saturday November 17th. Toys of good used quality can be dropped off at the REAPS office (1950 Gorse Street) between 10:00am and 2:00pm. These toys will be delivered to local children organizations where they will bring joy to another child!

We will also be accepting donations to the SPCA and the PG Humane Society at this time!